

Recombinant BMP-2 Monoclonal Antibody

catalog number: AN300061P

Note: Centrifuge before opening to ensure complete recovery of vial contents.

Description

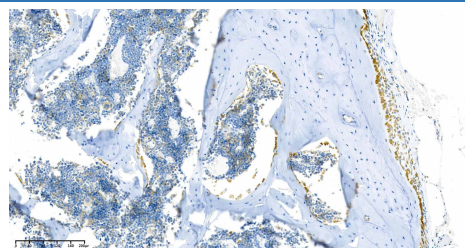
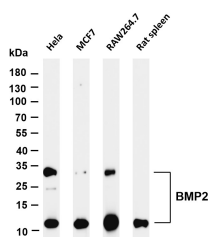
Reactivity	Human;Mouse;Rat
Immunogen	Recombinant Human / Mouse / Rat / Rhesus / Canine BMP-2 protein
Host	Rabbit
Isotype	IgG
Clone	A1171
Purification	Protein A
Buffer	0.2 µm filtered solution in PBS

Applications

Recommended Dilution

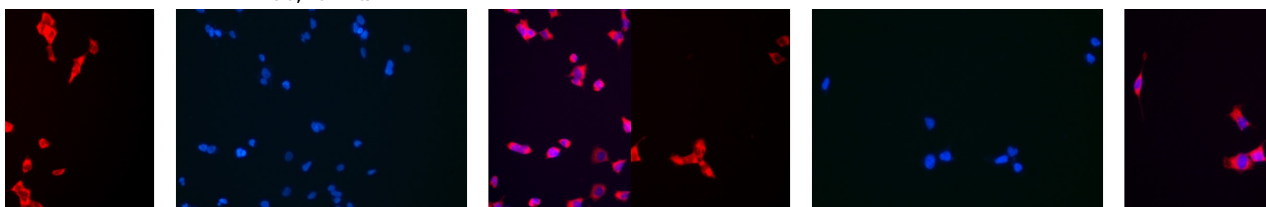
IHC	1:200-1:1000
WB	1:1000-1:5000
IF	1:200-1:1000
ELISA	1:5000-1:20000

Data



Various whole cell lysates were separated by 4-20% SDS-PAGE, and the membrane was blotted with anti-BMP2 antibody. The HRP-conjugated Goat anti-Rabbit IgG (H + L) antibody was used to detect the antibody. Lane 1: HeLa Lane 2: MCF7 Lane 3: RAW264.7 Lane 4: Rat spleen
Predicted band size: 45,13kDa Observed band size: 30,13kDa

Rat spine was stained with anti-BMP2 Rabbit antibody



Immunofluorescence analysis of HEK293. Picture A: BMP2 antibody (red). Picture B: DAPI (blue). Picture C: Merge of A+B
Immunofluorescence analysis of HEK293. Picture A: BMP2 antibody (red). Picture B: DAPI (blue). Picture C: Merge of A+B

Preparation & Storage

Storage	Store at -20°C Valid for 12 months. Avoid freeze / thaw cycles.
Shipping	Ice bag

For Research Use Only

Background

This gene encodes a secreted ligand of the TGF-beta (transforming growth factor-beta) superfamily of proteins. Ligands of this family bind various TGF-beta receptors leading to recruitment and activation of SMAD family transcription factors that regulate gene expression. The encoded preproprotein is proteolytically processed to generate each subunit of the disulfide-linked homodimer, which plays a role in bone and cartilage development. Duplication of a regulatory region downstream of this gene causes a form of brachydactyly characterized by a malformed index finger and second toe in human patients. [provided by RefSeq, Jul 2016]

For Research Use Only

Toll-free: 1-888-852-8623
Web: www.elabscience.com

Tel: 1-832-243-6086
Email: techsupport@elabscience.com

Fax: 1-832-243-6017

Rev. V1.3